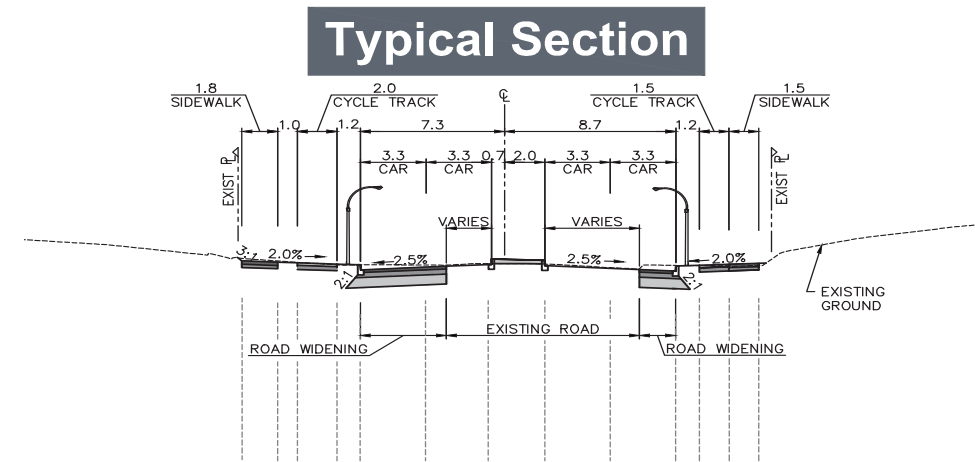


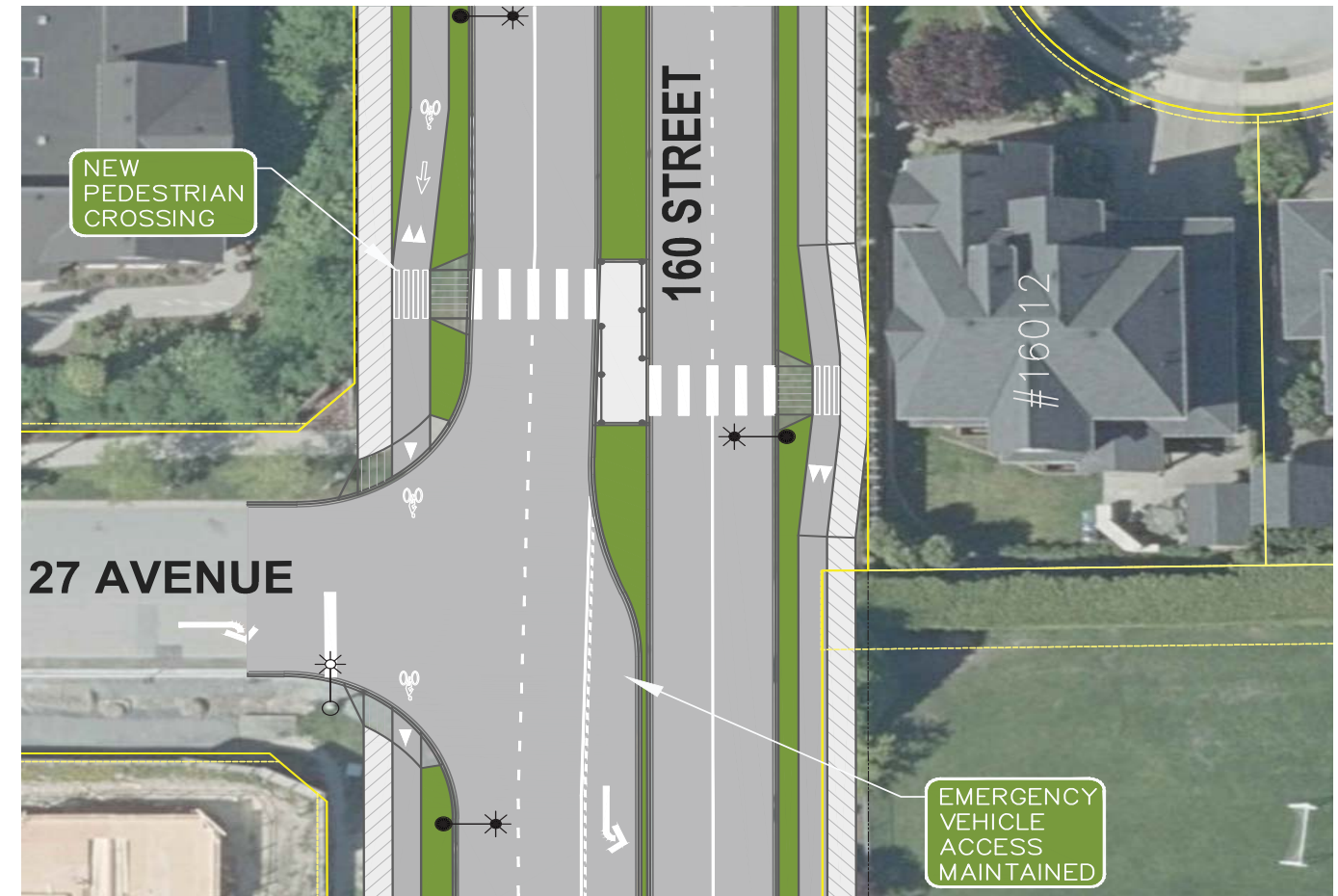
# 160 STREET ARTERIAL ROAD WIDENING FROM 26 AVENUE AND 32 AVENUE

## WELCOME

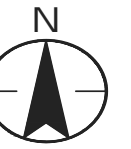
September 25, 2018



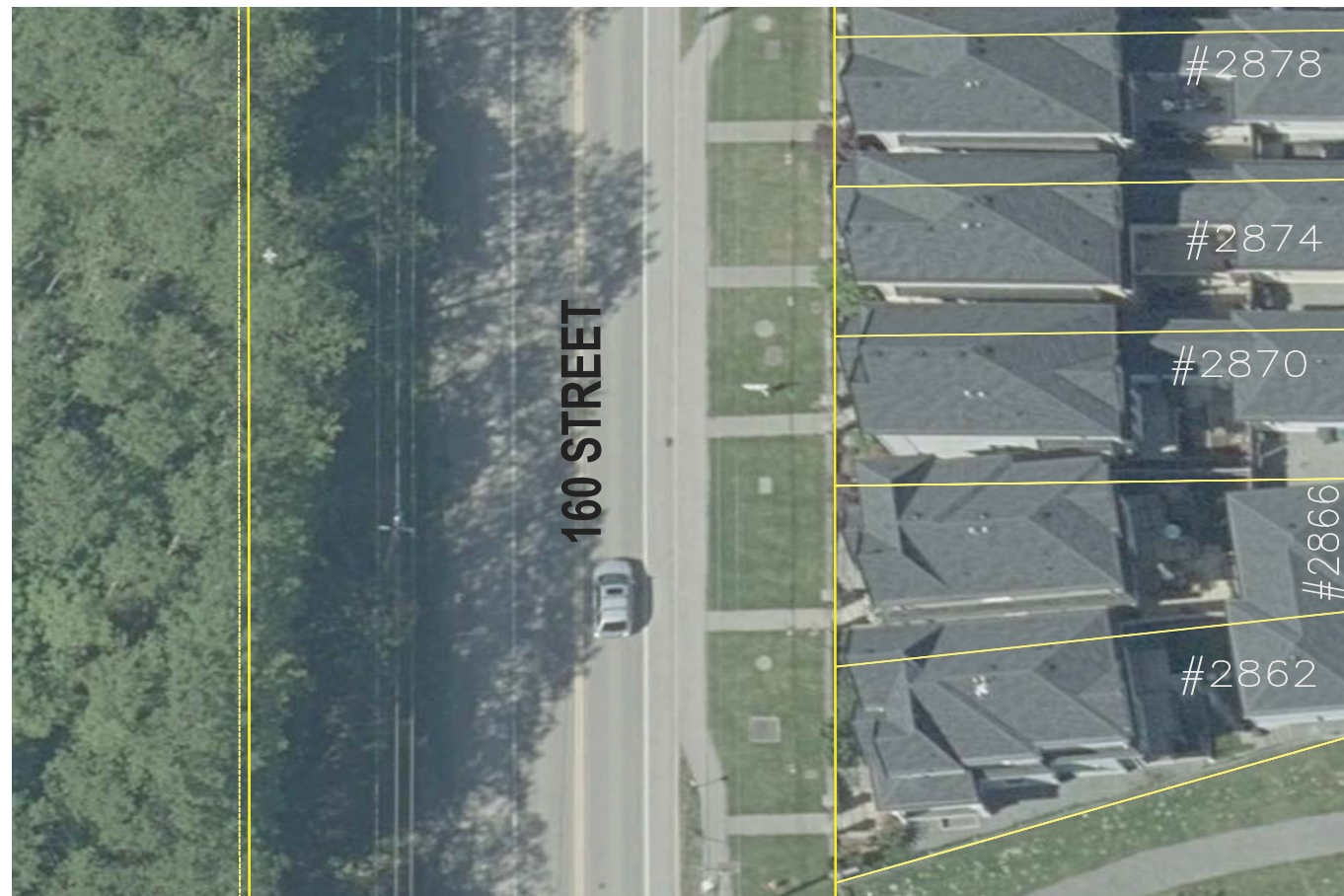
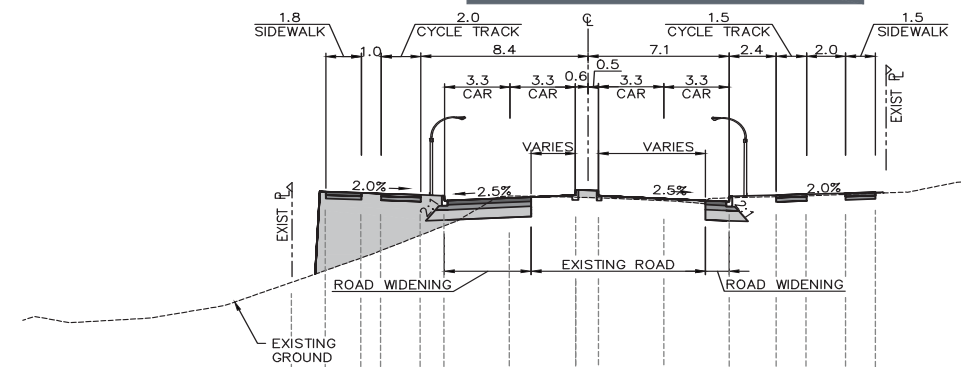
**Before Construction**



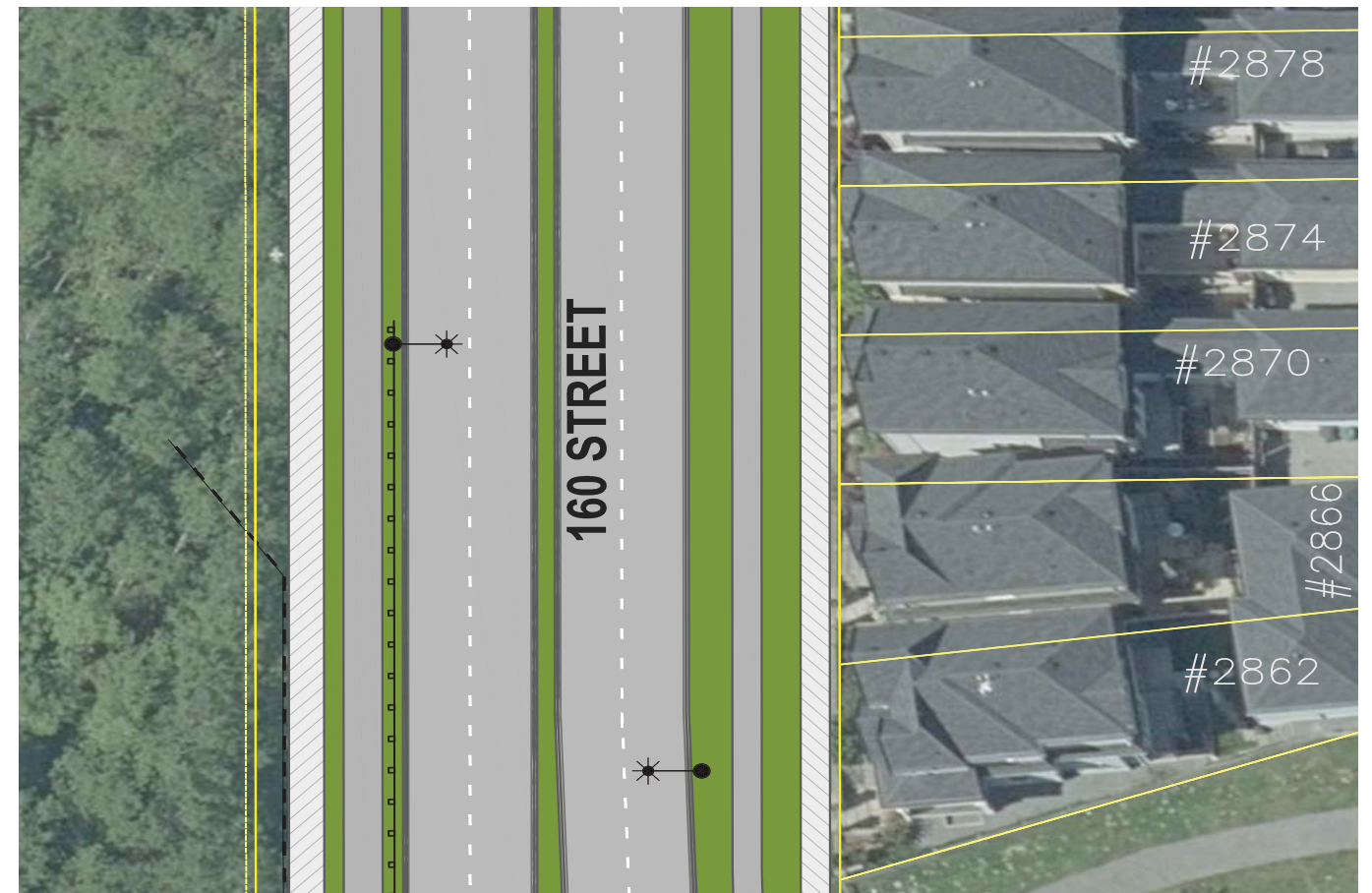
**After Construction**



**Typical Section**



**Before Construction**



**After Construction**



# LOCATION AND PROJECT PURPOSE



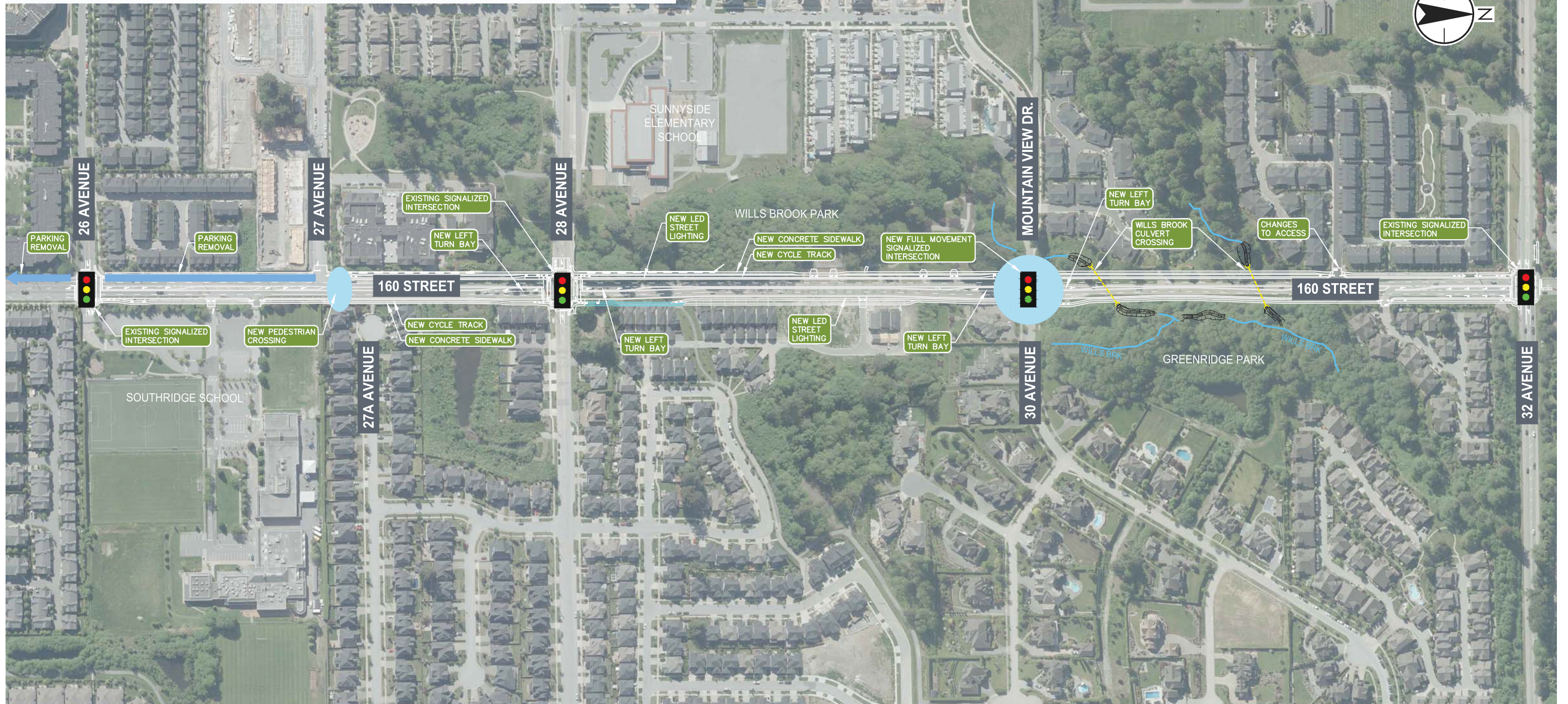
## 160 Street widening will:

- Provide additional road capacity to help manage congestion
- Support multi-modal travel by improving comfort and safety for people walking, cycling and taking transit
- Improve road safety through enhanced LED street lighting, intersection improvements, a new pedestrian crossing and a new full movement signalized intersection
- Enhance fish passage at Wills Brook

160 STREET ARTERIAL ROAD WIDENING FROM 26 AVENUE AND 32 AVENUE

[www.surrey.ca/ccp](http://www.surrey.ca/ccp)

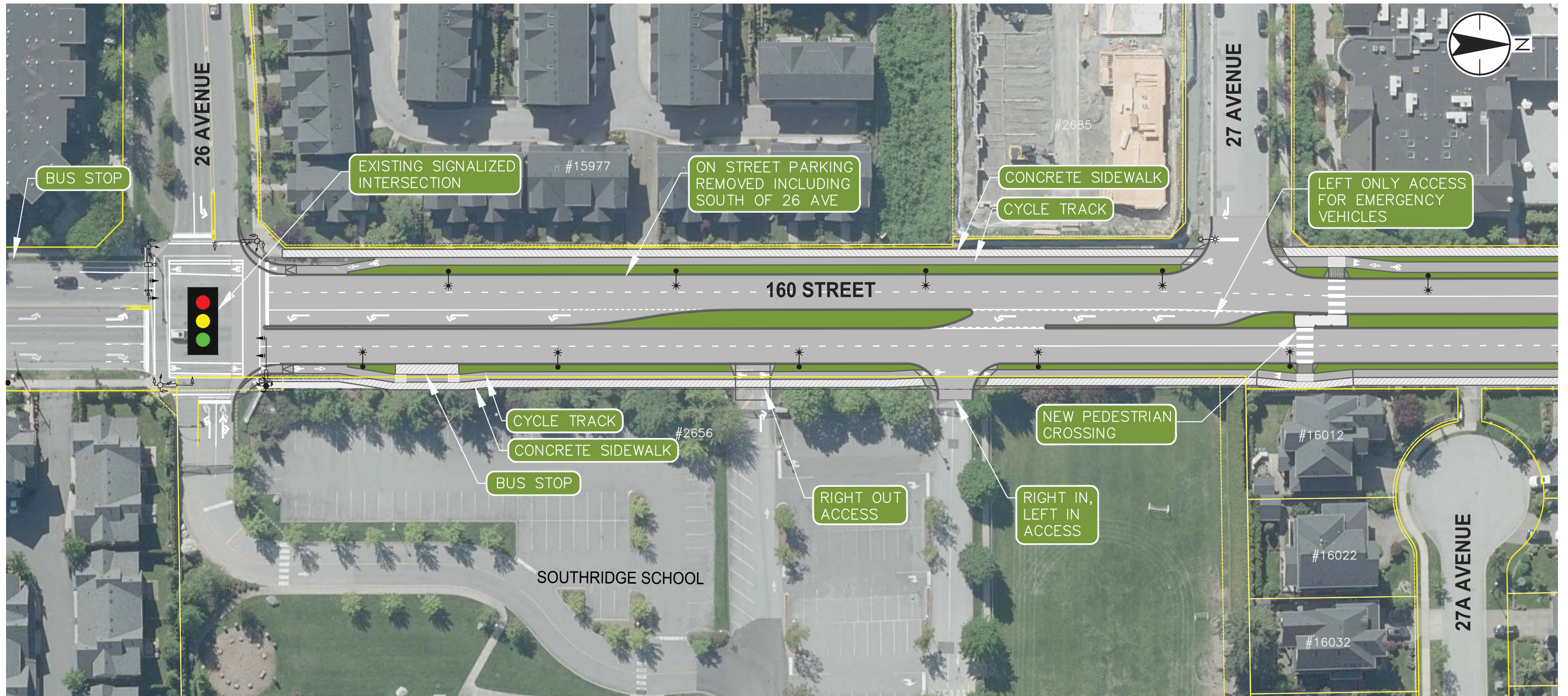
# How Does This Project Affect Me?



160 STREET ARTERIAL ROAD WIDENING FROM 26 AVENUE AND 32 AVENUE

[www.surrey.ca/ccp](http://www.surrey.ca/ccp)

# 160 STREET: 26 AVENUE TO 27 AVENUE

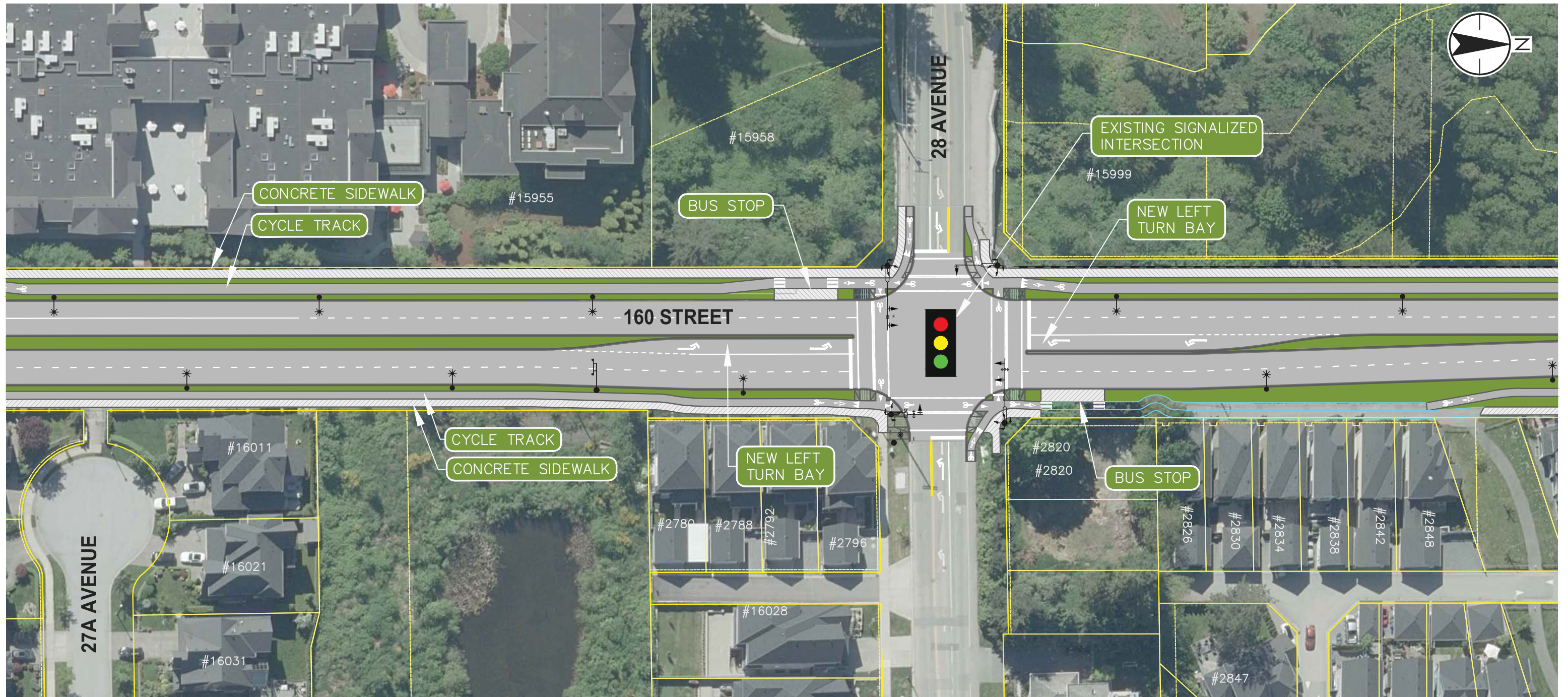


160 STREET ARTERIAL ROAD WIDENING FROM 26 AVENUE AND 32 AVENUE

[www.surrey.ca/ccp](http://www.surrey.ca/ccp)



# 160 STREET: 27 AVENUE TO 28 AVENUE



160 STREET ARTERIAL ROAD WIDENING FROM 26 AVENUE AND 32 AVENUE

[www.surrey.ca/ccp](http://www.surrey.ca/ccp)

160 STREET: #2848 TO #2955



160 STREET ARTERIAL ROAD WIDENING FROM 26 AVENUE AND 32 AVENUE

[www.surrey.ca/ccp](http://www.surrey.ca/ccp)





# 160 STREET: 30 AVENUE/MOUNTAIN VIEW DRIVE TO 3100 BLOCK

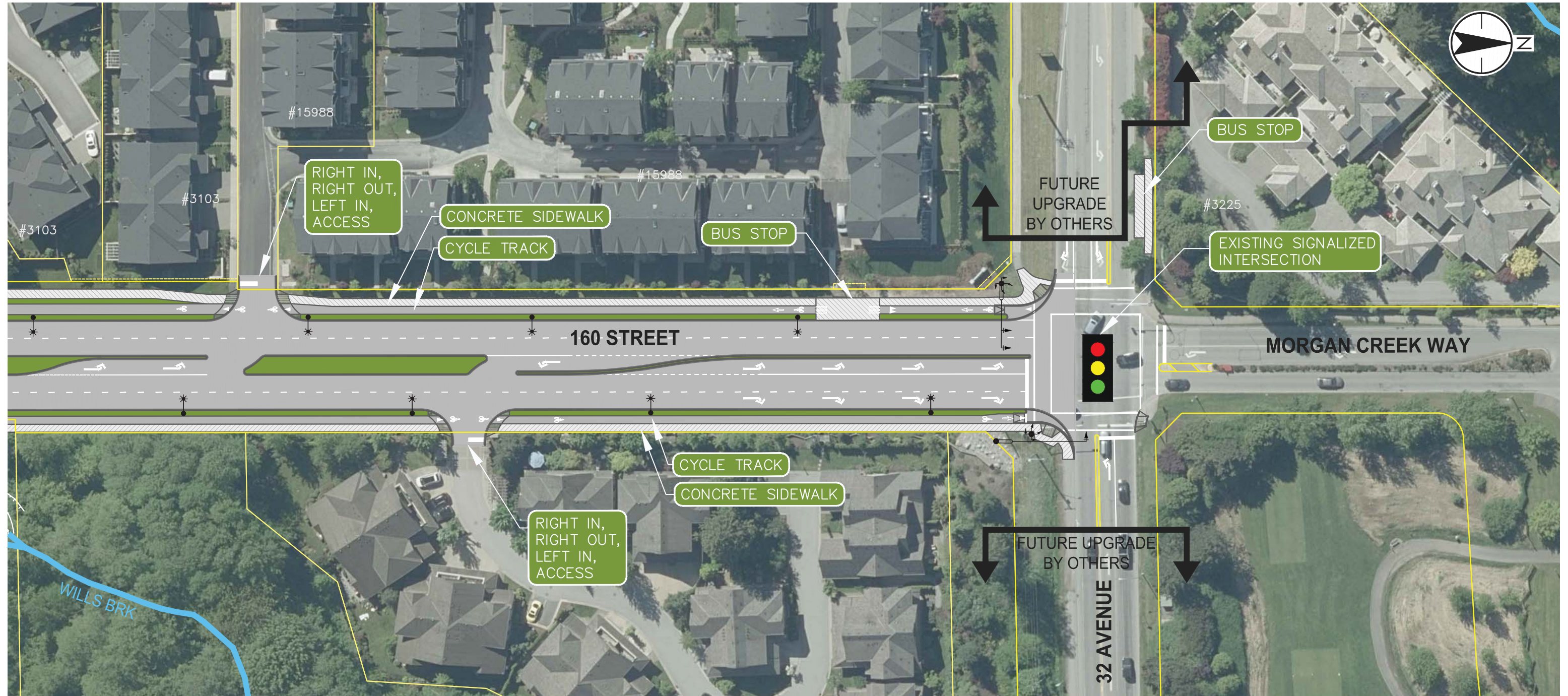


160 STREET ARTERIAL ROAD WIDENING FROM 26 AVENUE AND 32 AVENUE

[www.surrey.ca/ccp](http://www.surrey.ca/ccp)



# 160 STREET: 3100 BLOCK TO 32 AVENUE



## 160 STREET ARTERIAL ROAD WIDENING FROM 26 AVENUE AND 32 AVENUE

[www.surrey.ca/ccp](http://www.surrey.ca/ccp)